

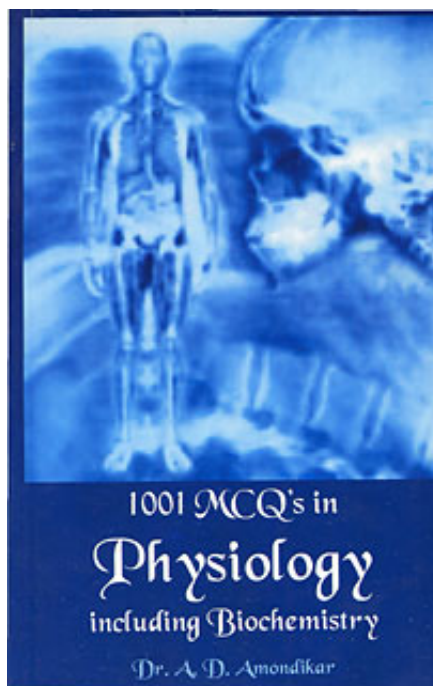
A.D. Amondikar

1001 MCQ's In Physiology Including Biochemistry

Leseprobe

[1001 MCQ's In Physiology Including Biochemistry](#)

von [A.D. Amondikar](#)



<http://www.narayana-verlag.de/b5576>

Das Kopieren der Leseproben ist nicht gestattet.

Narayana Verlag GmbH
Blumenplatz 2
D-79400 Kandern
Tel. +49 7626 9749 700
Fax +49 7626 9749 709
Email info@narayana-verlag.de
<http://www.narayana-verlag.de>

In unserer [Online-Buchhandlung](#) werden alle deutschen und englischen Homöopathie Bücher vorgestellt.



13. Reproductive System

1. **The Ovaries**
 - a. Start to produce ova at puberty
 - b. Go on producing ova throughout life
 - c. Discharge 5-10 ova during each menstrual cycle
 - d. Are essential for cyclic uterine activity
2. **Ovary secretes**
 - a. Oestrogen
 - b. Progesterone
 - c. Androgens
 - d. all of the above
3. **Extirpation of ovary causes**
 - a. Failure of development of secondary sexual characters before puberty
 - b. Ceasation of menstruation
 - c. Mental disturbances like irritability, depression
 - d. All of the above
4. **Menarche**
 - a. Is onset of menstruation in a girl
 - b. Occurs normally at 12 to 14 years age
 - c. Both of the above
 - d. None of the above
5. **In ovarian cycle**
 - a. Preovulatory phase occurs mainly due to secretion of LH
 - b. LH surge causes ovulation
 - c. No progesterone is secreted in post ovulatory phase
 - d. FSH is responsible for ovulation

1001 MCQ's in Physiology including Biochemistry

6. **Monthly ovarian cycle**
 - a. Is rhythmic changes in the rates of secretion of female hormones & corresponding changes in the ovaries
 - b. Duration is 20 to 45 days
 - c. Causes release of multiple ova from ovary
 - d. Only a & b are correct
7. **Follicle stimulating hormone**
 - a. Helps in maturation and growth of follicles
 - b. In the presence of LH, facilitates release of oestrogen by the theca interna of the graffian follicle.
 - c. Facilitates spermatogenesis.
 - d. All of the above
8. **The theca interna cells of graffian follicle produce**
 - a. Oestrogen
 - b. Progesterone
 - c. Relaxin
 - d. Inhibin
9. **Oestrogen hormone is released from**
 - a. Theca interna cells of graffian follicle
 - b. Interstitial cells of ovary
 - c. Placenta
 - d. All of the above
10. **Ovulation**
 - a. Occurs 14 days prior to the onset of next menstrual cycle
 - b. Causes release of a single ovum in the form of secondary oocyte
 - c. Occurs by production of stigma & its rupture within a short period
 - d. All of the above

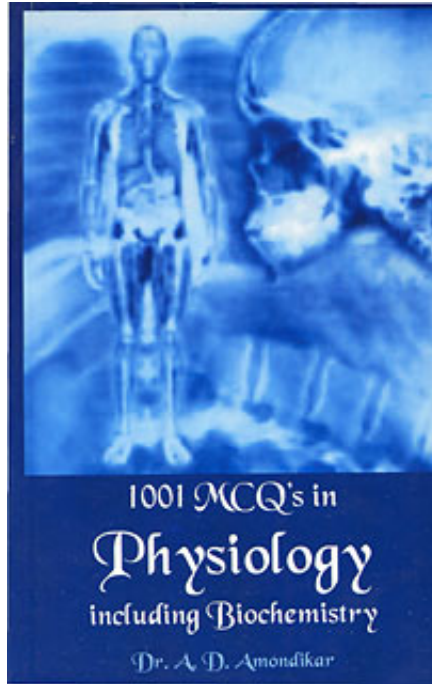
1001 MCQ's in Physiology including Biochemistry

11. The mature ovum released from ovary
 - a. Is a secondary oocyte
 - b. Is covered with corona radiata
 - c. Take approximately 72 hours to arrive at uterus
 - d. All of the above
12. In the days following ovulation
 - a. The body temperature rises
 - b. The plasma progesterone level rises
 - c. The plasma level of LH falls
 - d. All of the above
13. Preovulatory phase
 - a. Lasts for 8 to 9 days
 - b. Causes growth of few ovarian follicles
 - c. Causes release of large quantities of progesterone from these cells
 - d. Only a & b are correct
14. In past ovulatory phase
 - a. In granulosa cells of follicle are converted to lutein cells
 - b. Corpus luteum is formed
 - c. Corpus luteum secretes progesterone
 - d. All of the above past ovulatory phase
15. State which of the following statements regarding ovarian cycles is false ?
 - a. Large quantities of progesterone secreted after ovulation decrease the production of FSH & LH by anterior pituitary
 - b. Inhibin released from lutein cells inhibits secretion of FSH
 - c. In preovulatory phase dominant gonadotrophin hormone is LH
 - d. Prostaglandin's play role in causing rupture of follicle and ovulation

1001 MCQ's in Physiology including Biochemistry

16. **In a normal healthy 25 yrs of women**
- Plasma LH falls during 2 days prior to ovulation
 - Plasma FSH falls during 2 days prior to ovulation
 - Ovulation is followed by a decline in plasma oestradiol level for a short while
 - Ovulation is followed by a decline in plasma progesterone
17. **State which of the following statements regarding ovarian cycle is false?**
- FSH and LH both are required for the development of primordial follicles to graffian follicles
 - Theca externa cells release oestrogen
 - Granulosa cells are converted to lutein cells after ovulation
 - Oestrogen release increase FSH Secretion from anterior pituitary
18. **Fertilisation of ovum normally occurs in**
- Uterus
 - Cervix of uterus
 - Fallopian tube
 - None of the above
19. **The implantation of fertilized ovum occurs**
- Between 7th & 9th days after ovulation
 - Occurs because of penetration & erosion of uterine mucosa by proteolytic enzymes produced by trophoblast
 - At a stage of blastocyst
 - All of the above

1001 MCQ's in Physiology including Biochemistry



A.D. Amondikar

[1001 MCQ's In Physiology Including Biochemistry](#)

208 Seiten, paperback
erschienen 2007



Mehr Homöopathie Bücher auf www.narayana-verlag.de